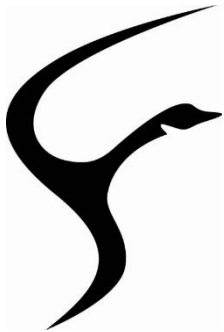


# RAINBOW LAKE SCHOOL

## 2023-2024 SCHOOL ASSURANCE PLAN

# DRAFT

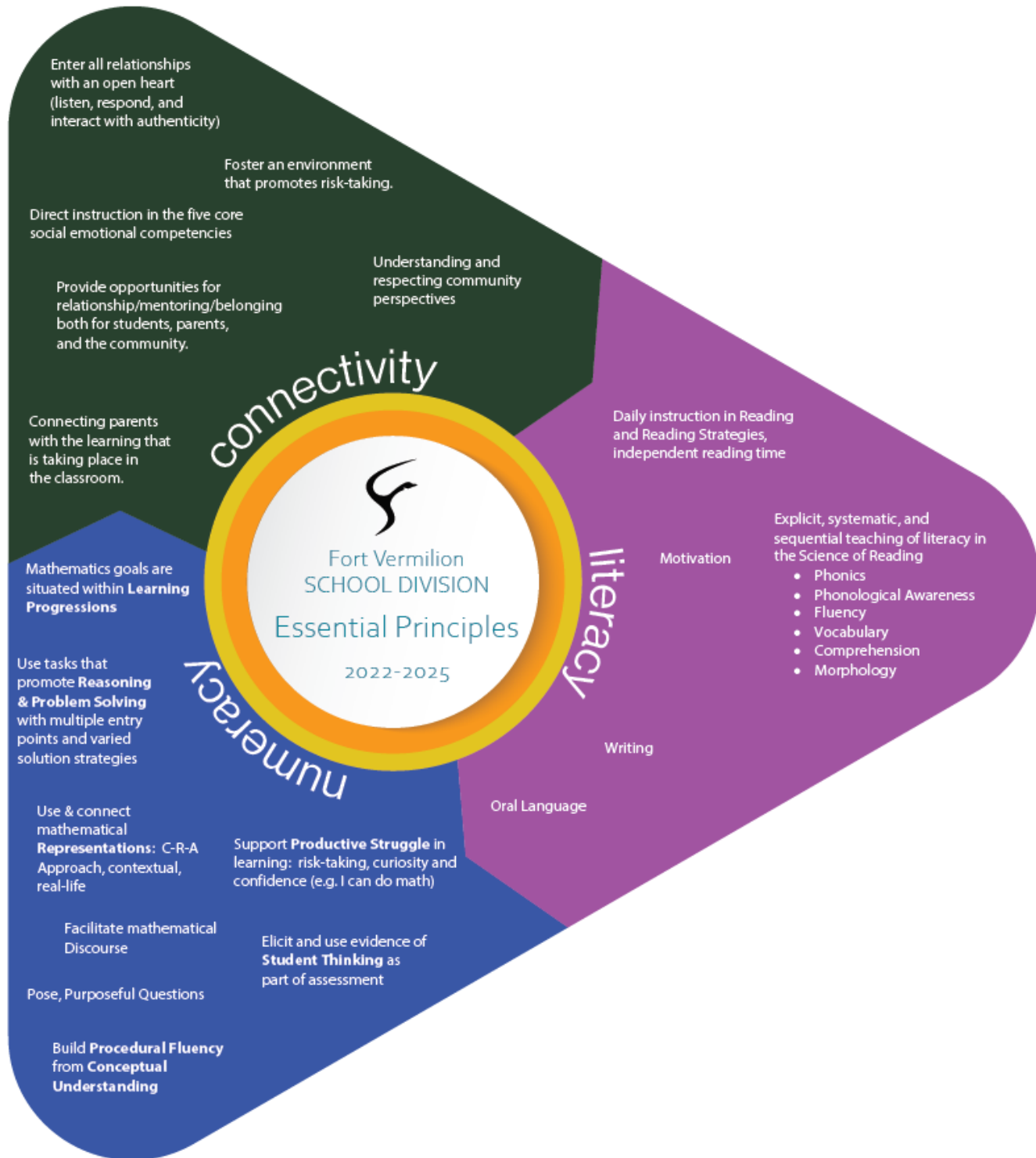


**Principal:** Stephanie Connors

**Trustee:** Dale Lederer



*Our Children, Our Students, Our Future*



## FVSD Essential Principles 2022-2025 (From Graphic)

Connectivity	Literacy	Numeracy
<ul style="list-style-type: none"> <li>● Enter all relationships with an open heart (listen, respond, and interact with authenticity)</li> <li>● Foster an environment that promotes risk-taking</li> <li>● Direct instruction in the 5 core socio emotional competencies</li> <li>● Understanding and respecting community perspectives</li> <li>● Provide opportunities for relationship/mentoring/belonging both for students, parents, and the community.</li> <li>● Connecting parents with the learning that is taking place in the classroom.</li> </ul>	<ul style="list-style-type: none"> <li>● Daily instruction in reading and reading strategies; daily independent reading time.</li> <li>● Explicit, systematic, and sequential teaching of literacy in the Science of Reading               <ul style="list-style-type: none"> <li>○ Phonics</li> <li>○ Phonological Awareness</li> <li>○ Fluency</li> <li>○ Vocabulary</li> <li>○ Comprehension</li> <li>○ Morphology</li> </ul> </li> <li>● Motivation</li> <li>● Writing</li> <li>● Oral Language</li> </ul>	<ul style="list-style-type: none"> <li>● Math goals are situated within Learning Progressions.</li> <li>● Use tasks that promote reasoning and problem solving with multiple entry points and varied solution strategies.</li> <li>● Use and connect math representations: C-R-A Approach, contextual, real-life               <ul style="list-style-type: none"> <li>○ C-R-A Math Approach                   <ul style="list-style-type: none"> <li>■ Concrete (Hands-on, manipulatives)</li> <li>■ Representational (Drawing, tables, graphs)</li> <li>■ Abstract (Digits, symbols, algorithms)</li> </ul> </li> </ul> </li> <li>● Support productive struggle in learning: risk-taking, curiosity, and confidence (I can do math)</li> <li>● Facilitate mathematical discourse</li> <li>● Elicit and use evidence of student thinking as part of assessment</li> <li>● Pose purposeful questions</li> <li>● Build procedural fluency from contextual understanding.</li> </ul>

Priority	Essential Principle Focus for Improvement	School Goal <i>Reframe the Division Goal into a School Goal that highlights the school focus</i>	Baseline Data <i>(current reality)</i>	Target Data <i>(desired reality)</i>	Implementation Plan <i>Consider research and best-practice in the short and long term</i>	Short Report <i>(completed as data becomes available)</i>
<b>CONNECTIVITY</b>  FVSD will foster connectivity and well-being amongst community, students, parents, and staff.	Direct instruction in the 5 core socio emotional competencies.  Core Competencies: *Self-Awareness *Self-Management *Social Awareness *Relationship Skills *Responsible Decision Making	RLKS will foster connectivity and well-being amongst community, students, parents, and staff, by providing opportunities for direct instruction of socio-emotional competencies.	Connectivity Survey  Div 1/2 - like coming to school, enjoy the staff, feel safe but, need to work on peer relationships.  Div 3/4 - They feel accepted by staff and feel safe, need to work on relationships with peers.	Connectivity Survey  Div 1/2- All kids (100%) to see they have at least 1 close friend.  Div 3/4- 80% of students will feel accepted by their peers.	Programming/Daily instruction (5 mins) Div 1 - Second Step Div 2 - Second Step Div 3 - Open Parachute Div 4 -  - Monthly school themes. - Assembly highlight - School-wide buddy programs - House teams (LOTS IN THIS) - Whole-school activities	
<b>CONNECTIVITY COACHING PLAN</b> to support school-wide focus	<b>Professional Development</b>		<b>Collaboration</b>		<b>Coaching</b>	
<b>LITERACY</b>  All students will improve literacy skills.	Motivation	Rainbow Lake School will promote an increase in motivation toward reading to improve overall literacy skills.		By June 2024, the percentage of RLKS students at average or above will increase by the following: TOSREC 25% TOSWRF 20% TOWER 25%	-School-wide reading competitions - Feature books & authors. - Librarian - read 1 chapter... *give one quote, line... - Daily SSR	

				**Add High school	<ul style="list-style-type: none"> <li>- Reward Programs like: *Reading...Give it a shot</li> <li>*Children's Choice</li> <li>- Buddy Reading (scheduled)</li> <li>- Improvement in Classroom libraries (types of books and organization)</li> <li>- Guest authors</li> <li>-Promote student choice of reading material. (self selected book bags)</li> </ul>	
LITERACY COACHING PLAN to support school-wide focus	<b>Professional Development</b>		<b>Collaboration</b>		<b>Coaching</b>	
<b>NUMERACY</b> All students will improve numeracy skills.	Support Productive Struggle in learning: risk-taking, curiosity and confidence (e.g I can do math)	Rainbow Lake School will facilitate opportunities for productive struggle within mathematics with the intention of improving numeracy skills.		By June 2024, the percentage of RLKS students at average or above will increase by 25% based on WRAT5 scores.  **High School data tracking?	<ul style="list-style-type: none"> <li>-Open ended multiple entry questions.</li> <li>-Best practices in the classroom would include using multiple resources to create a toolbox of best strategies to facilitate productive struggle through math concepts.</li> <li>* Math Focus</li> <li>*Math Makes Sense</li> <li>* Leaps &amp; Bounds</li> </ul>	

<b>NUMERACY COACHING PLAN to support school-wide focu</b>					<ul style="list-style-type: none"> <li>*Mathletics</li> <li>*Khan Academy</li> <li>*Reveal Math K-5</li> <li>*solve me problems</li> <li>-Math challenges (school wide (assemblies) and in classrooms)</li> <li>-Math talks (demonstrating multiple methods of solving the same problem)</li> <li>-Entry tickets for both lessons and units (introduce problem prior to teaching concept later that lesson/unit)</li> </ul>	
	<b>Professional Development</b>	<b>Collaboration</b>		<b>Coaching</b>		

As the representative of the School Council at this school, I hereby give my endorsement to this School Assurance Plan for the 2023-2024 school year. I hereby acknowledge that the school council has had an opportunity to provide feedback on this plan and support it as is presented here.

\_\_\_\_\_

School Council Chair

\_\_\_\_\_

Date

As Principal of this school, I hereby submit our School Assurance Plan for the 2023-2024 school year. This plan has been created in collaboration with all staff at this school, as well as with the school council.

\_\_\_\_\_

Principal

\_\_\_\_\_

Date