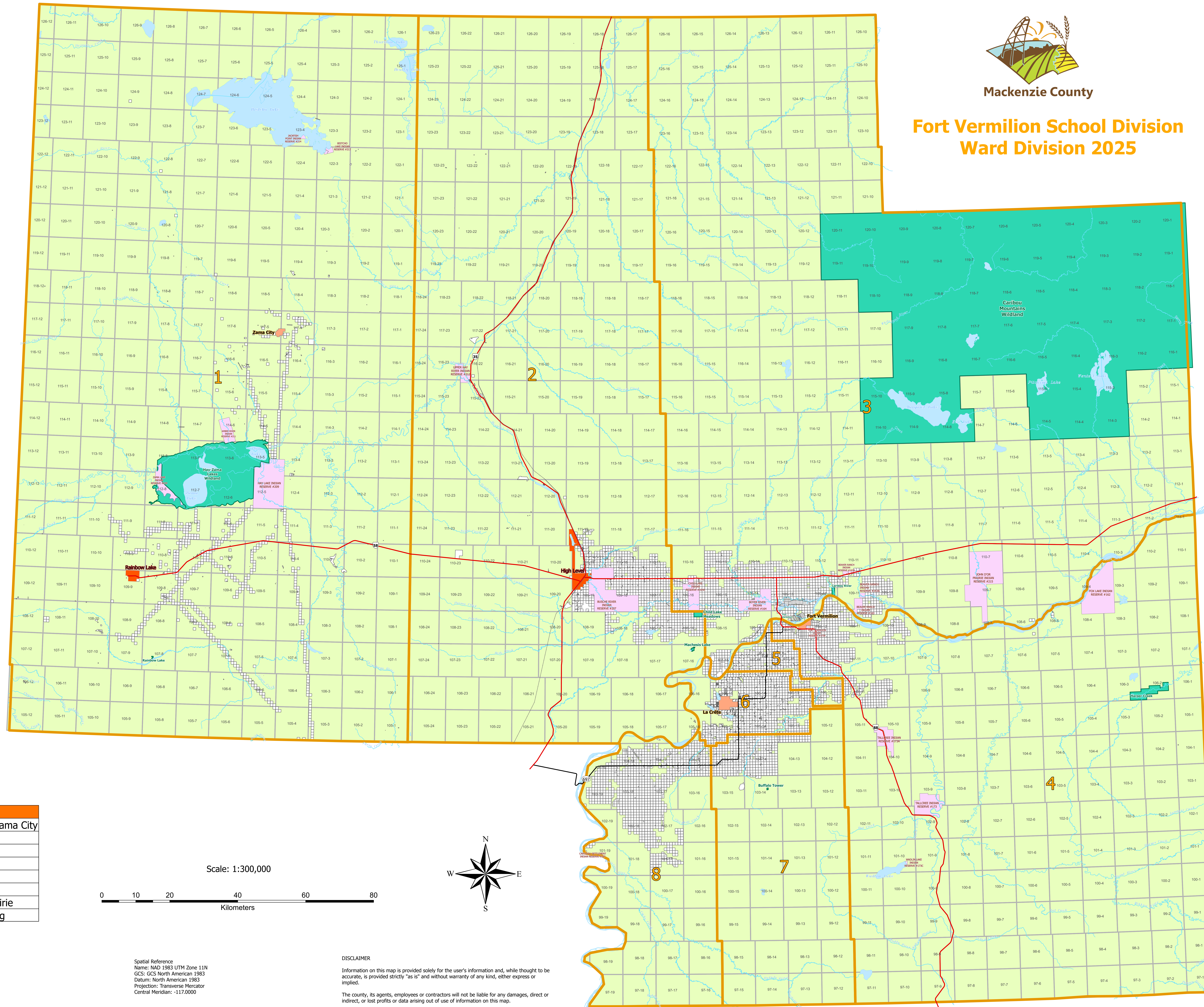




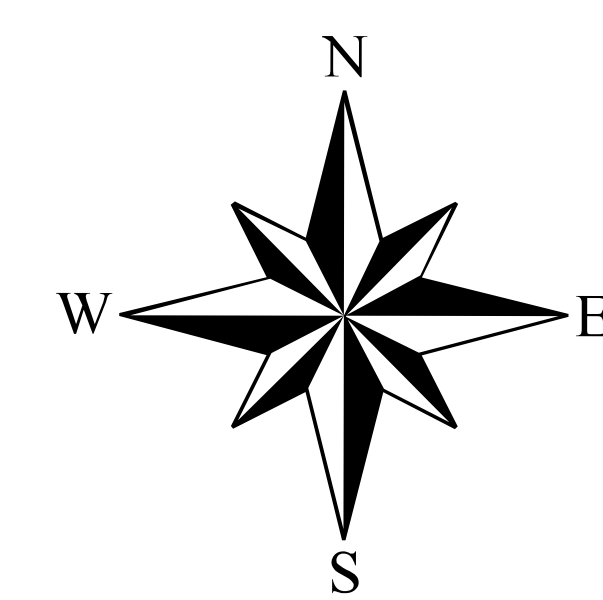
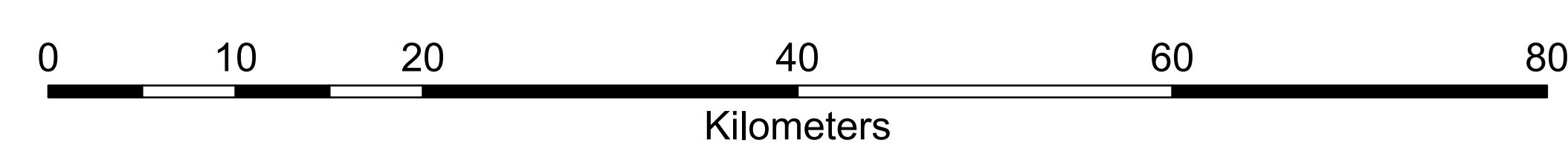
Mackenzie County

Fort Vermilion School Division Ward Division 2025



| Ward District | Ward Area |
|---------------|-------------------------|
| Ward 1 | Rainbow Lake/ Zama City |
| Ward 2 | High Level |
| Ward 3 | Rocky Lane |
| Ward 4 | Fort Vermilion |
| Ward 5 | Blumenort |
| Ward 6 | La Crete |
| Ward 7 | Buffalo Head Prairie |
| Ward 8 | Tompkins Landing |

Scale: 1:300,000



Legend

| | | | |
|--|------------------------------|--|--------------|
| | Provincial Primary Highway | | First Nation |
| | Provincial Secondary Highway | | Town |
| | Railway | | Hamlet |
| | Ward District | | Private Land |
| | Township Boundary | | Crown Land |
| | Protected Areas | | |

Spatial Reference
 Names: NAD 1983 UTM Zone 11N
 GCS: GCS North American 1983
 Datum: North American 1983
 Projection: Transverse Mercator
 Central Meridian: -117.0000

DISCLAIMER

Information on this map is provided solely for the user's information and, while thought to be accurate, is provided strictly "as is" and without warranty of any kind, either express or implied.

The county, its agents, employees or contractors will not be liable for any damages, direct or indirect, or lost profits or data arising out of use of information on this map.